



StormPod®

UNIVERSAL STORMWATER MANAGEMENT SYSTEM

INFILTRATOR



StormPod® Infiltrator Advantage

The StormPod system offers the distinct advantage and versatility to be designed as an open bottom detention or retention system that allows storm water runoff to infiltrate into the underlying soils. Using the **StormPod® Infiltrator System** enables treatment of the storm water through the underlying soils, reduces the amount of runoff volume and pollutants leaving the site, and allows the runoff to recharge the groundwater supply meeting Low LID requirements.

Pre-Treatment Chamber

The StormPod® Infiltrator can be designed with an integral pre-treatment chamber that provides a permanent pool of water creating a water trap that contains sediment and floating debris (trash, oil, etc.), preventing them from advancing to the open bottom chamber clogging voids in the stone bed.

High Flow Bypass Weir

An internal outlet control structure with a high-flow bypass weir can be designed to be placed inside the StormPod® Infiltrator system eliminating the need for a separate bypass structure, thus reducing costs and simplifying the design.

Aquifers

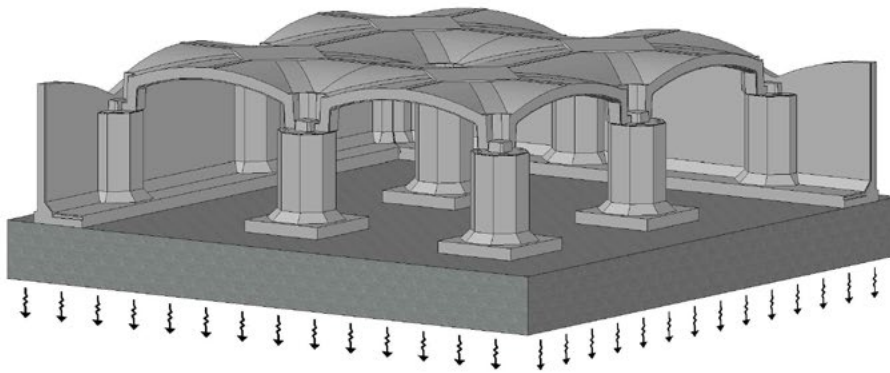
As the water rises in the system, the external aquifers between the concrete modules fill with water increasing the storage capacity of the structure. These aquifers also allow water that infiltrates down from the surface directly above the structure to pass vertically through the system infiltrating directly into the soil.

Maintenance

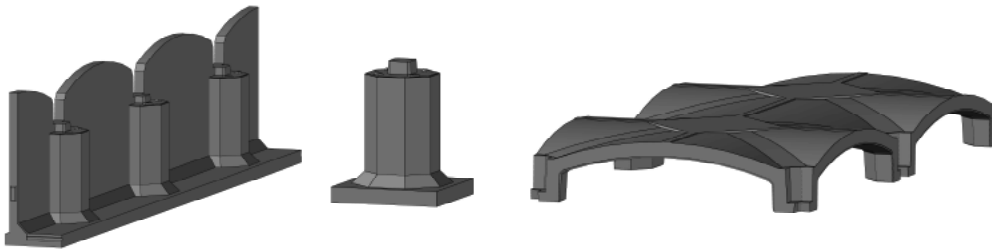
No other storm water management system can match the StormPod® Infiltrator's ease of maintenance. It is the only system on the market that provides a single open chamber no matter what the configuration of the system. Unlike other systems, the StormPod® Infiltrator has ample inside headroom allowing maintenance crews total accessibility throughout the system.



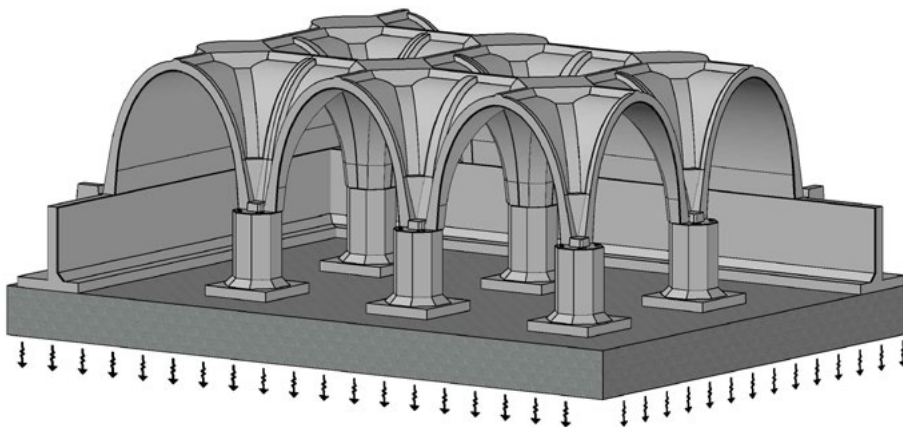
Low-Pro Infiltration System (LID)



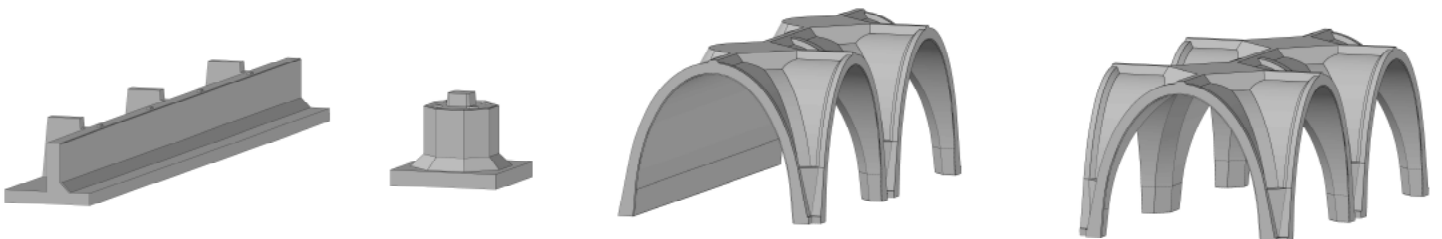
INFILTRATOR LO-PRO VOLUMES	
HT (FT)	VOLUMES PER MODULE (CF)*
2	272
3	392
4	512
5	632



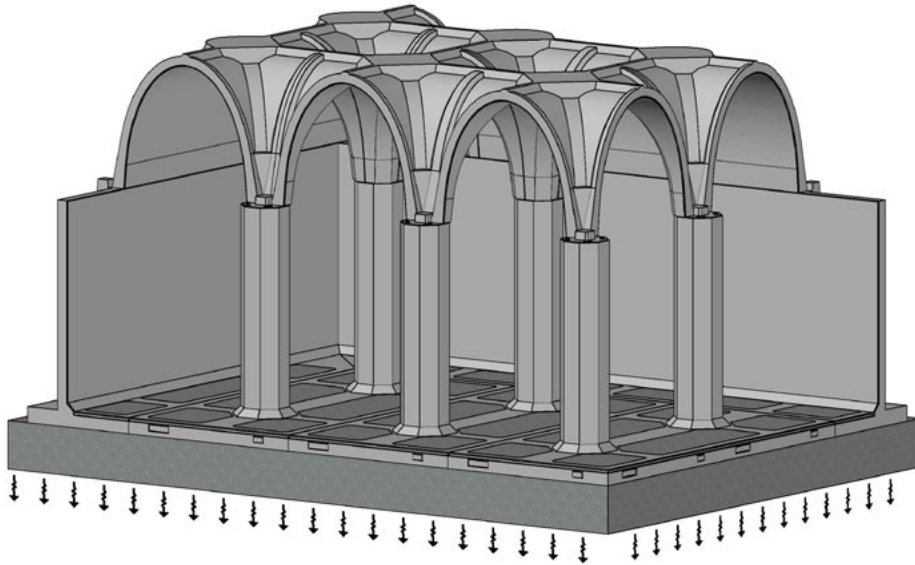
Mid-Pro Infiltration System (LID)



INFILTRATOR MID-PRO VOLUMES		
HT (FT)	VOLUMES PER MODULE (CF)*	
	180	360
6	755	930
7	875	1,050
8	995	1,170
9	1,115	1,290

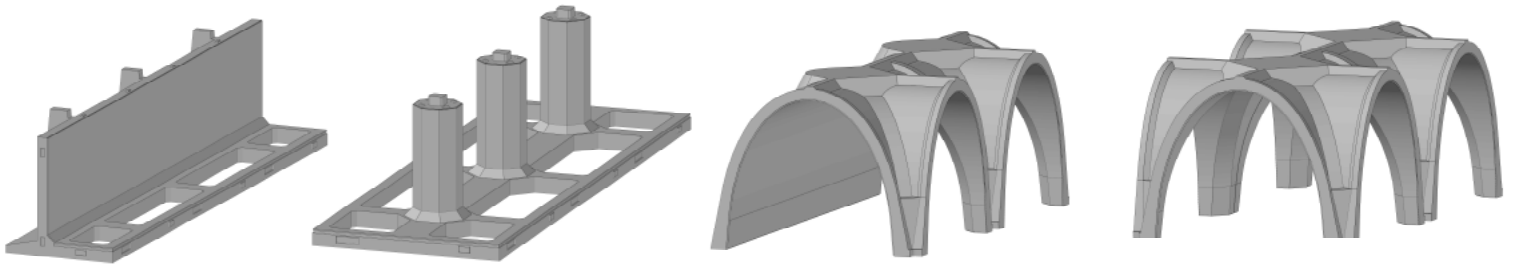


High-Pro Infiltration System (LID)



INFILTRATOR HI-PRO VOLUMES

HT (FT)	VOLUMES PER MODULE (CF)*	
	180	360
10	915	1,170
11	1,035	1,290
12	1,155	1,410
13	1,275	1,530
14	1,395	1,650
15	1,515	1,770
16	1,635	1,890
17	1,755	2,010
18	1,875	2,130



Patented System